

INSTALLATION INSTRUCTIONS

DESCRIPTION: Folding Poly Windscreen Kit

PART NUMBER: B4M-F83J0-V0

MODEL: 2021+ Wolverine RMax2, RMax4, X2 and X4



⚠ WARNING

Please read and understand these instructions completely before installation to avoid possible injury, or damage to the accessory or vehicle.

WARRANTY INFORMATION:

In the United States, see your Yamaha dealer for a copy of the Yamaha Genuine Parts and Accessories Limited Warranty.

NOTICE:

Installation of this kit requires a torque wrench and should be performed by an authorized Yamaha dealer or a qualified mechanic.

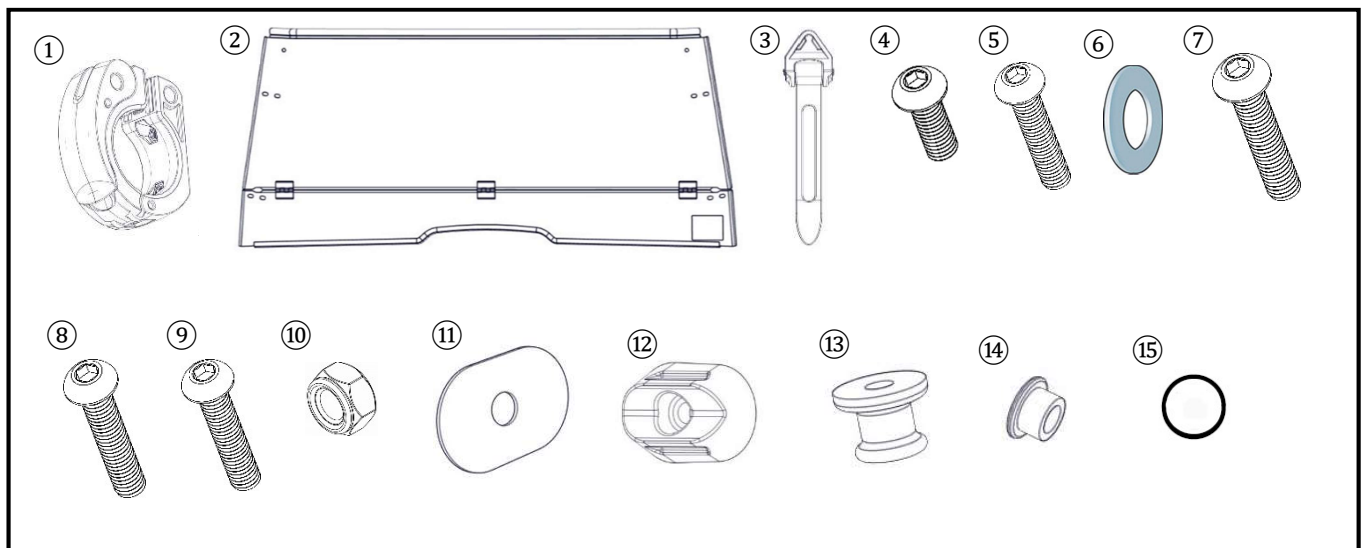
DEALER OR INSTALLER:

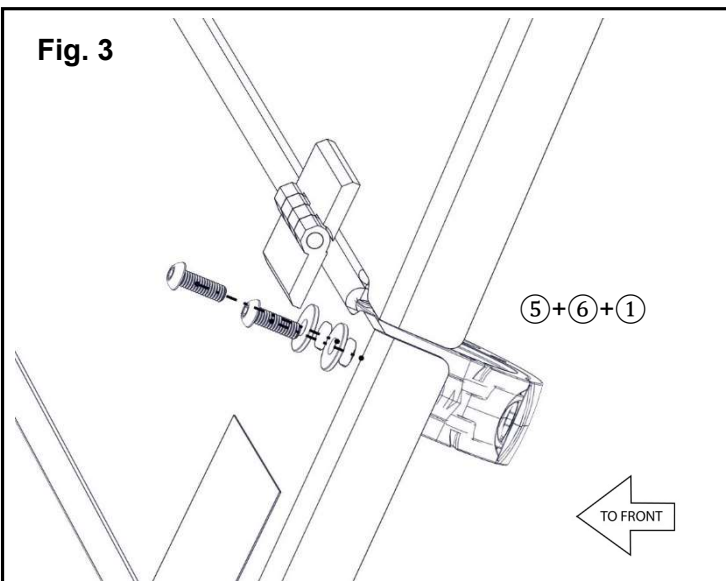
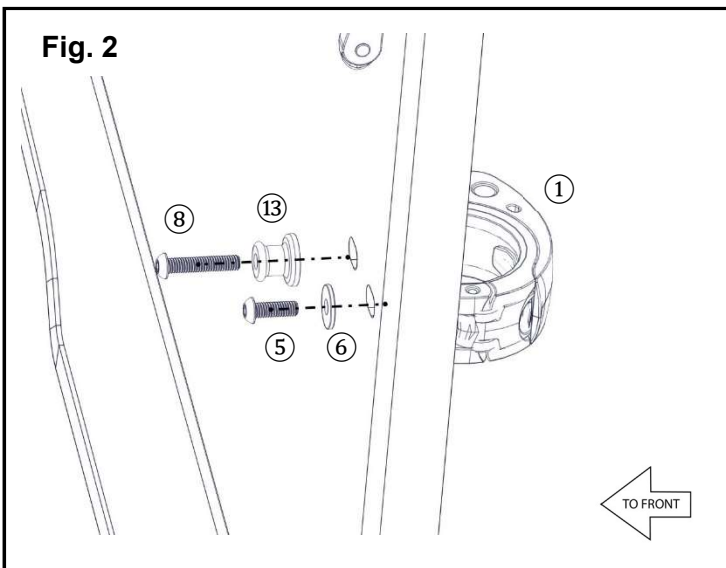
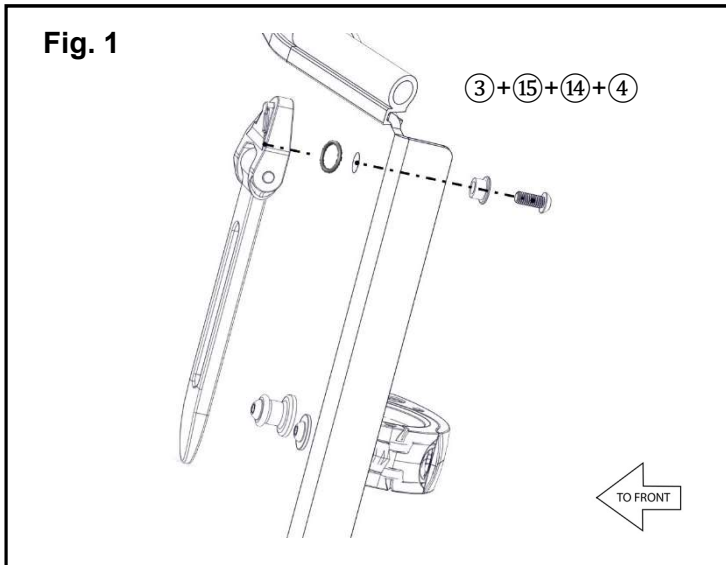
These instructions contain important information for future reference and *must* be given to the customer.

PARTS LIST:

No.	Part Number	Description	Qty
--	B4M-F83J0-V0	Folding Poly Windscreen Kit	--
①	BG4-F72C2-V0	Clamp	4
②	B4M-F8380-V0	Windshield Assembly	1
③	B4M-F17N0-V0	Latch Assembly	2
④	92017-06014	M6x14 Button Head Hex Bolt	2
⑤	90111-06821	M6x16 Button Head Hex Bolt	6
⑥	90201-068G7	M6 Washer	10
⑦	90111-06841	M6x35 Button Head Hex Bolt	2
⑧	90110-06831	M6x30 Button Head Hex Bolt	2
⑨	90111-06012	M6x20 Button Head Hex Bolt	2
⑩	95617-06100	M6 Nylon Locking Nut	4
⑪	B4M-F8344-V0	Tape	2
⑫	B4M-K7529-V0	Spacer Bumper	2
⑬	B4M-K7175-V0	Latch Holder	4
⑭	B4M-K7239-V0	Spacer	2
⑮	93210-10118	O-Ring	2

* Part supplied with kit only and not available separately.



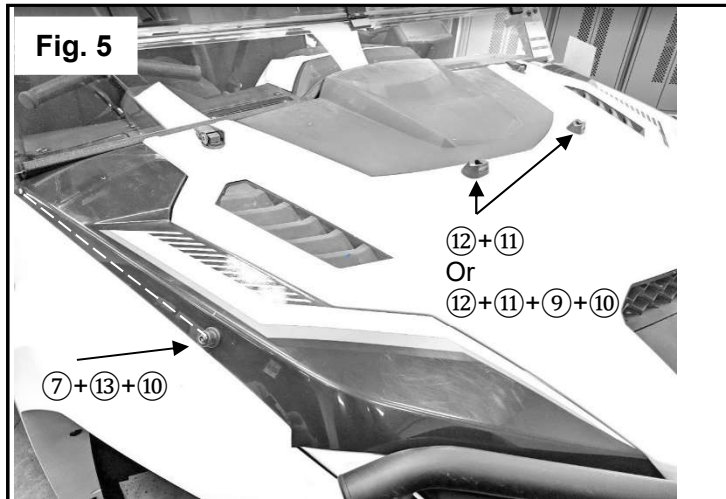
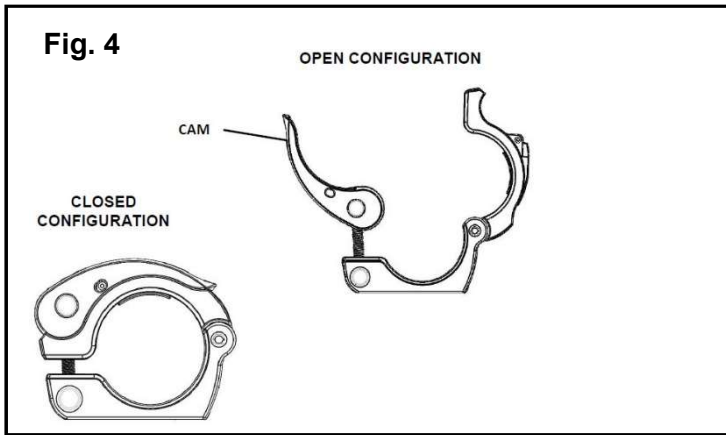


PREPARATION:

- Place the vehicle on a secure and level surface.
- Set the parking brake.
- Set up a work area with a scratch free surface to assemble the windshield.
- **Clean the mounting surfaces before beginning installation.**

INSTALLATION:

1. Protect the (2) Windshield Assembly by placing a mat between the assembly and the work surface.
2. Ensure the seal is properly installed along the top and bottom edge of the (2) Windshield Assembly with the bulb on the seal facing the same direction as the right angle folded edges of (2) Windshield Assembly.
3. Assemble the (3) Latch Assembly to the (2) Windshield Assembly using one (15) O-Ring, one (14) Spacer and (4) M6x14 Button Head Hex Bolt. Torque to 5Nm (0.5 kg-m or 3.6 lb-ft). (Fig. 1)
4. Place one (1) Clamp over slotted holes on the upper windshield. The clamps should have the hinge facing to the outside edge of the windshield.
5. Attach the top (1) Clamps to the (2) Windshield Assembly with one (8) M6x30 Button Head Hex Bolt and one (13) Latch Holder on the inside mounting hole. The outside mounting holes use one (5) M6x16 Button Head Hex Bolt and one (6) M6 Washer. Do not fully tighten the bolts at this step. (Fig. 2)
6. Attach the two lower (1) Clamps with two (6) M6 Washers and two (5) M6x16 Button Head Hex Bolts per clamp. Do not fully tighten the bolts at this step. (Fig. 3)
7. Place a large towel over the hood of the vehicle and lay the (2) Windshield Assembly on top of the towel with the clamps side facing up.
8. Open the four (1) Clamps and place the two lower clamps on the forward ROPS tubes.
9. Ensure that the lower edge of the windshield is seated in the groove on the hood.
10. Latch close the two lower (1) Clamps. If a clamp is too tight or too loose, open and rotate the latch handle cam until the clamp has the proper tension when closed. (Fig. 4)
11. After the lower (1) Clamps are closed, rotate the (2) Windshield Assembly to the closed position and latch the upper (1) Clamps closed. Adjust the



Notice:

The Folding Windshield is to be in the closed and locked position on the ROPS for safe towing. The vehicle is to be towed in the forward direction.

MAINTENANCE:

Periodically, check torque on all hardware. If loose hardware is found, re-torque to specification.

CARE AND CLEANING:

Clean the windscreen with a clean soft cloth and mild soap and water solution. Rinse and dry. For additional cleaning, use Yamalube® Windshield & Visor Plastic Cleaner & Conditioner (ACC-PLASPOL-11).

NOTICE:

- Avoid using alkaline or acid cleaner, gasoline, brake fluid, or any other solvent.
- Some cleaning compounds for plastics may leave scratches on surfaces of the windscreen.
- Test by polishing an area which does not affect your visibility.

CUSTOMER SERVICE:

For further information see your Yamaha dealer.

ESTIMATED TIME TO INSTALL: 0.5 HRS.

clamps until it has the proper tension on the ROPS. (Fig. 4)

- Center the (2) Windshield Assembly on the vehicle.
- Ensure the sealing edge on the upper edge of the (2) Windshield Assembly sits flush against the Sun Top. Some additional adjustment may be needed. Torque the clamp hardware to 5 Nm. (0.5 kg-m or 3.6 lb-ft)

Tip: If it is positioned too high, it may interfere with how the windshield closes.

- Lower the (2) Windshield Assembly onto the hood of the vehicle and insert the (12) Spacer Bumper under the top edge of the (2) Windshield Assembly. Mark around the edge of the bumpers to mark the location.
- Raise the (2) Windshield Assembly and lay it against the ROPS. It is optional to mark the center holes for the (12) Spacer Bumpers and drill into the hood. Skip Step 16 and proceed to Step 17 if you do not want to drill into the hood.
- Optional:** Drill a ¼ inch hole in the marked center location for the (12) Spacer Bumper. Clean the drilled locations of debris.
- Clean the mounting locations and the (12) Spacer Bumpers with rubbing alcohol. Peel the backing and attach the (11) Tape to the bottom of the (12) Spacer Bumpers.
- Peel the other side of the tape and adhere the (12) Spacer Bumpers to the hood in the marked locations. **Only if Drilled:** Insert one (9) M6x20 Button Head Hex Bolt through the (12) Spacer Bumper and into the drilled hole in the hood. Thread on one (10) M6 Nylon Locking Nut and torque to 2Nm (0.2 kg-m or 1.4 lb-ft).
- Fold down the (2) Windshield Assembly and let it rest on the (12) Spacer Bumpers. Pull the (3) Latch Assembly on the right side of the hood above the fender, mark a location on the indicated centerline where the strap has approximately 10mm of preload.
- Repeat Step 20 on the other side of the hood.
- Drill a 6mm hole in the marked locations. Insert one (7) M6x35 Button Head Hex Bolt through the (13) Latch Holder and into the hole in the body work. Thread one (10) M6 Nylon Locking Nut on the (7) M6x35 Button Head Hex Bolt. Torque to 5 Nm (0.5 kg-m or 3.6 lb-ft) (Fig. 5)